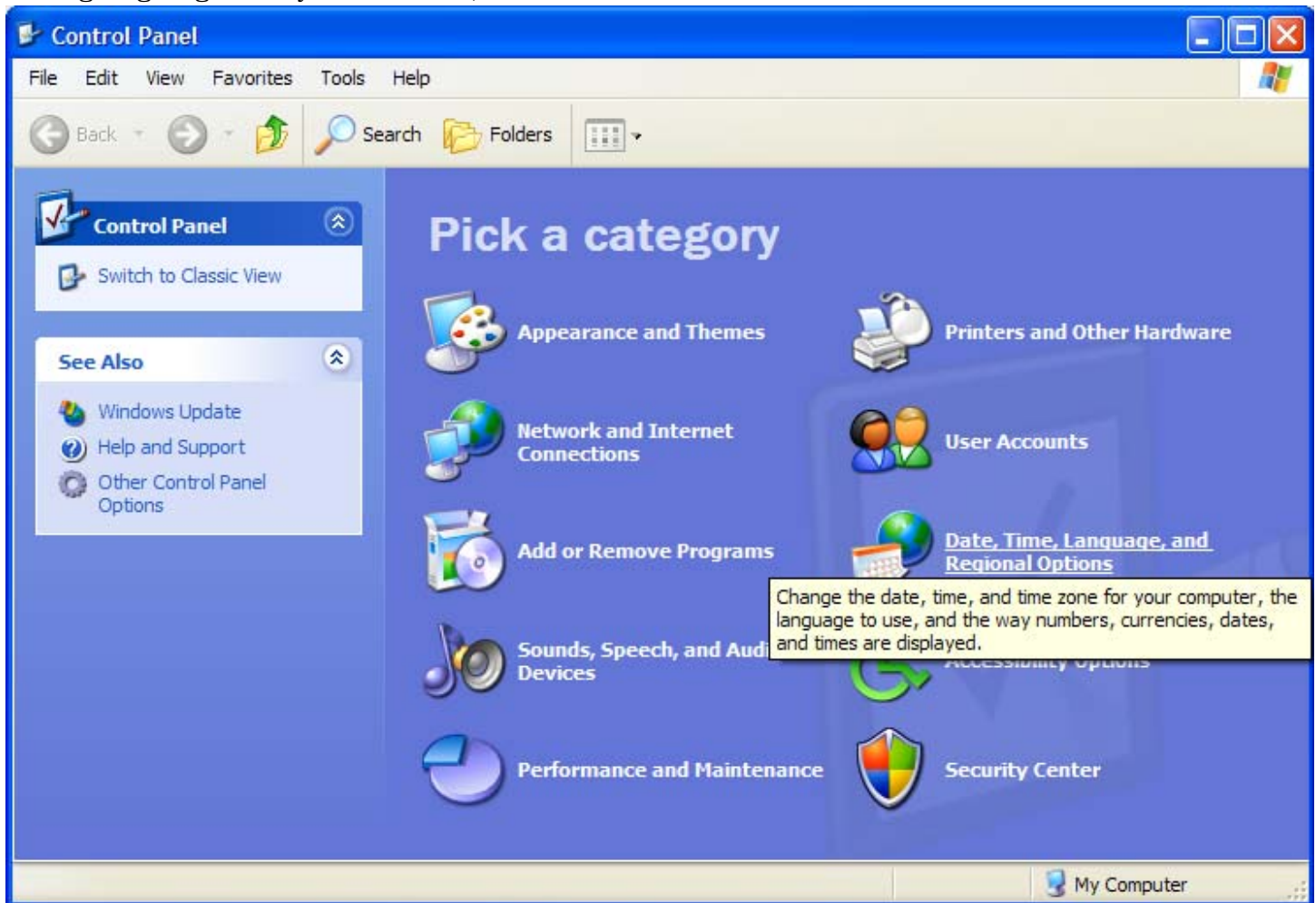
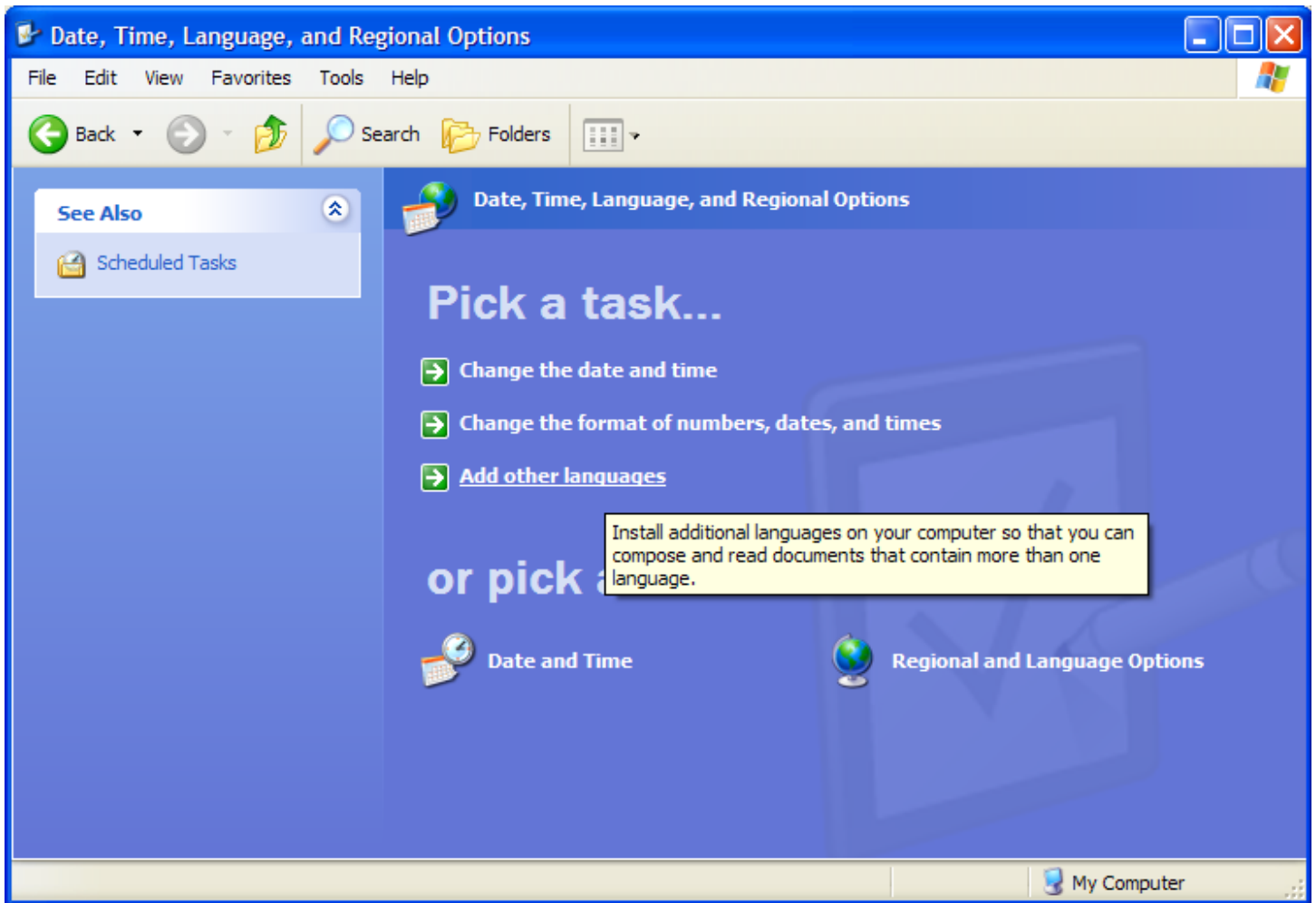


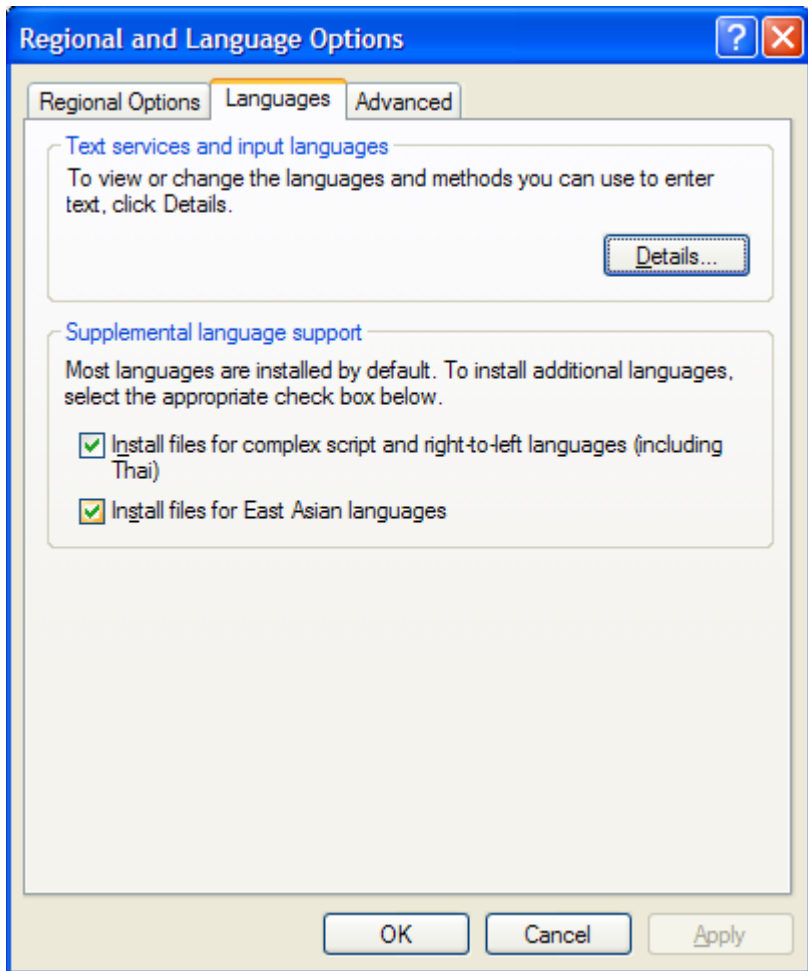
如何建立中文字輸入

英文 ASCII (American Standard Code for Information Interchange) 以及歐州各國文的字碼表達是以 single byte 轉換，因此最多只有 255(加上 NULL character)種變換。而 UNICODE 是以 double-byte 轉換，因此最多有 65,536 種變換，這就包函中文、日文、韓文、阿拉伯文、當然還有英文，幾乎所有文字。中文輸入的條件：1)作業系統(Operating System)支援中文(UNICODE)，2)文字輸入的器具 (keyboard, tablet pad, etc.)。

I am using Windows XP Professional edition (英文的 XP 作業系統). You should have XP CD in hand, and login the PC with administrator right. The installation step begins from the Control Panel which can be get from doing Start -> Control Panel -> Language and Regional Options. The following steps are presented by the screen captures. Each screen capture shall be self explainable by the Button highlighted by color, Check-box marked, or Text string highlighted by under-line, etc.







Install handwriting recognition

If you recently purchased a new computer, the Microsoft handwriting recognition engine might have been installed by the computer manufacturer. No further installation is necessary. If you installed Microsoft Office XP, or if you purchased a new computer with it installed, the handwriting recognition engine is included but might not be installed. Follow the instructions below to install it.

Important

- Handwriting recognition engines are language-specific. The first five Microsoft engines that are available are Simplified Chinese, Traditional Chinese, English, Japanese, and Korean. Engines for other languages will become available.

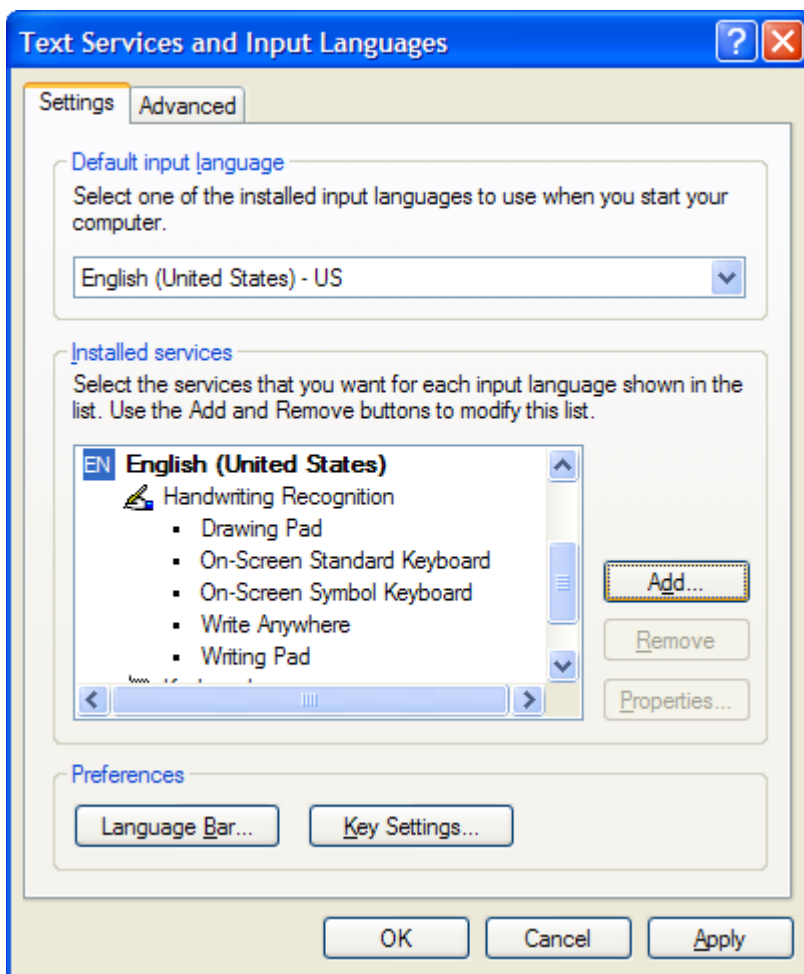
[To determine if the handwriting recognition engine is installed.](#)

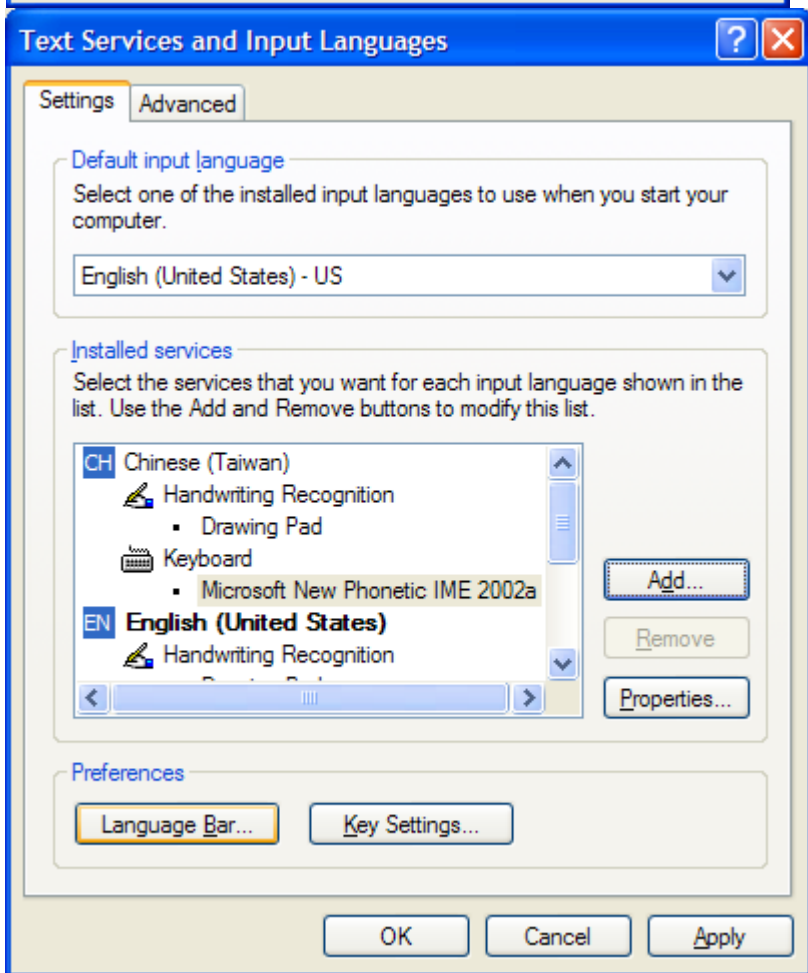
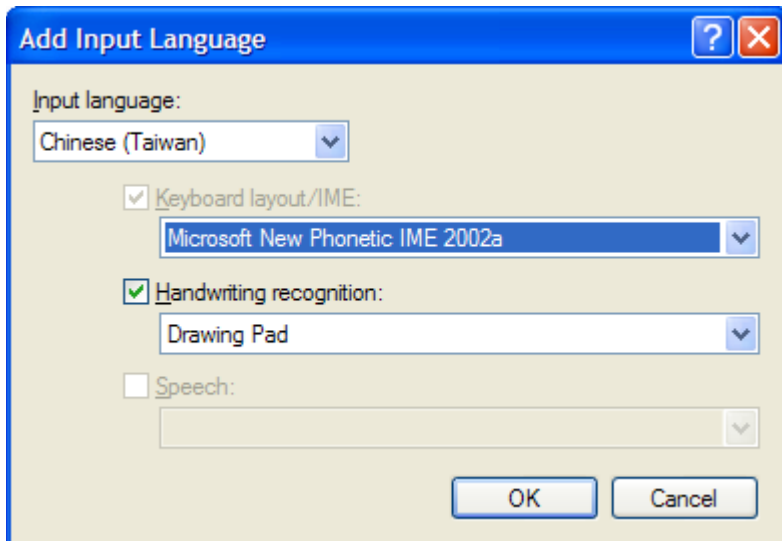
1. Open [Regional and Language Options](#) in Control Panel.
2. On the **Languages** tab, under **Text services and input languages**, click **Details**.
3. Under **Installed services**, click **Add**.

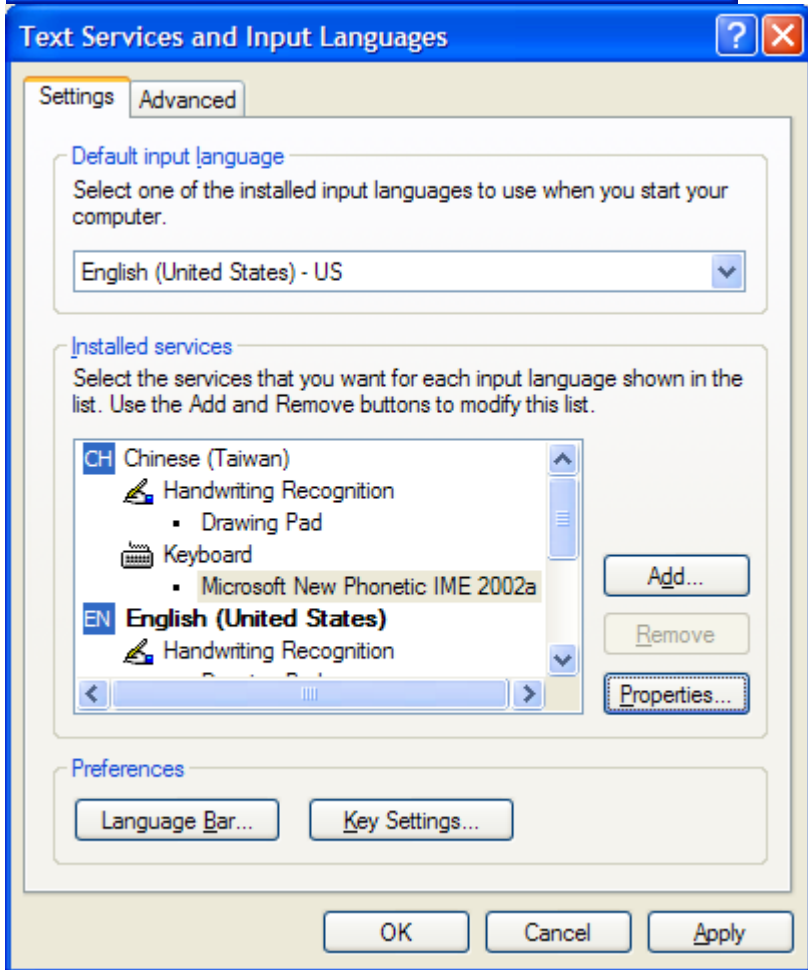
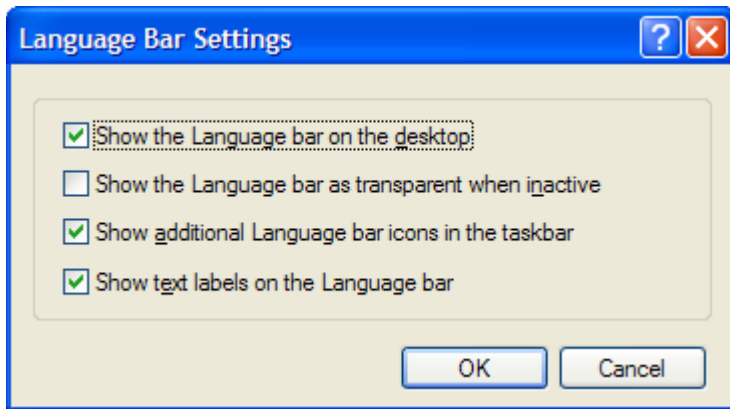
If **Handwriting recognition** is available as an option, the handwriting recognition engine is installed. If it is not available, the engine is not installed.

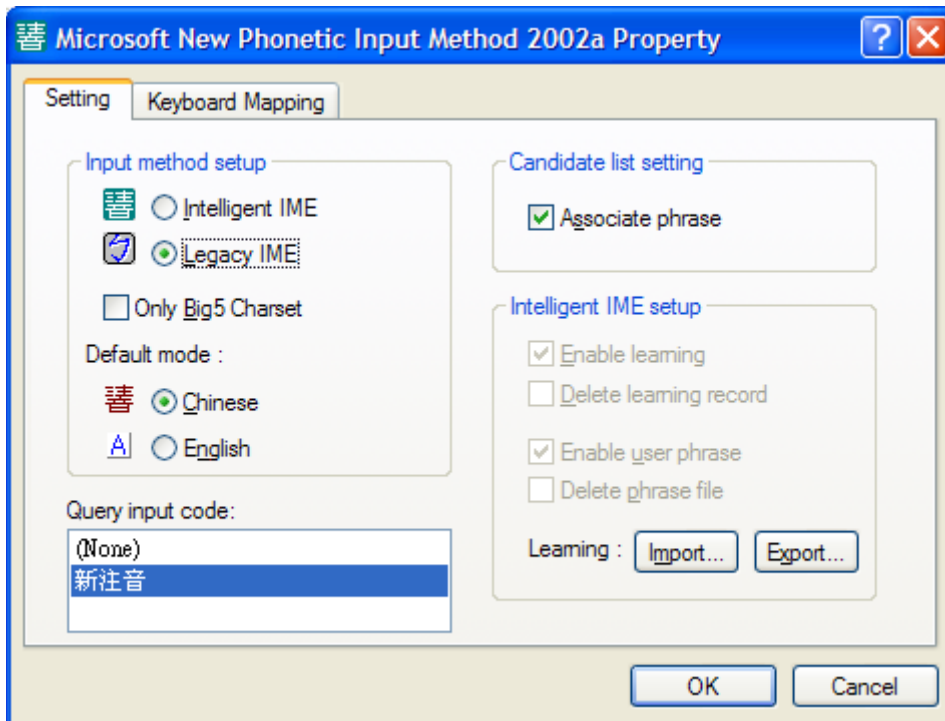
[To install handwriting recognition if Microsoft Office XP is installed](#)

1. Open [Add or Remove Programs](#) in Control Panel.
2. Click **Change or Remove Programs**, click **Microsoft Office XP**, and then click **Change**.
3. Click **Add or Remove Features**, and then click **Next**.
4. Under **Features to install**, double-click **Office Shared Features**.
5. Double-click **Alternative User Input**, click the box next to **Handwriting**, and then click **Run from My Computer**.
6. Click **Update**.

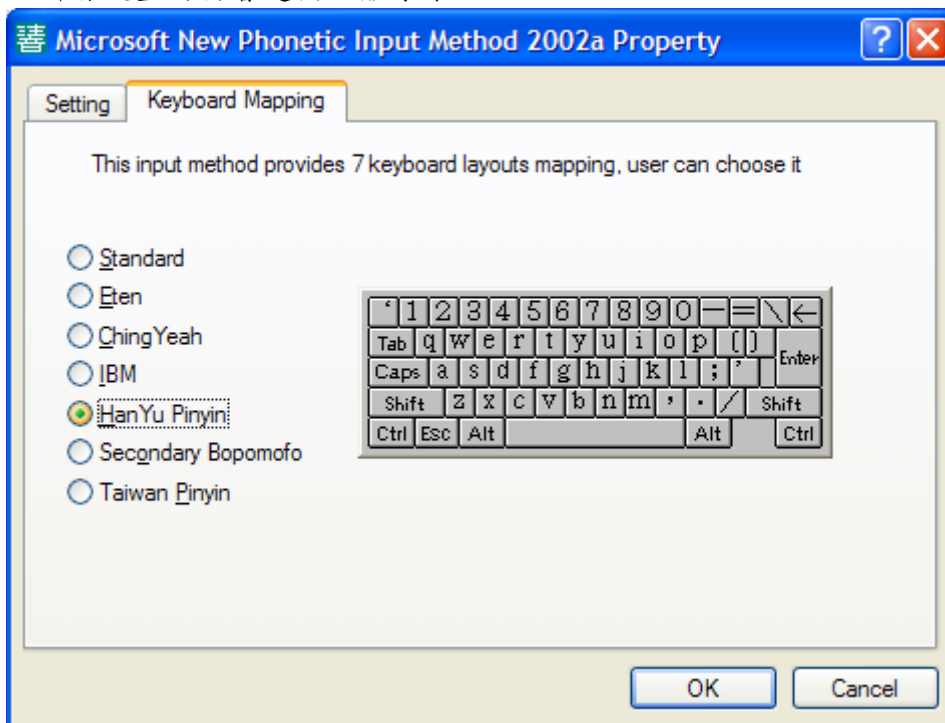






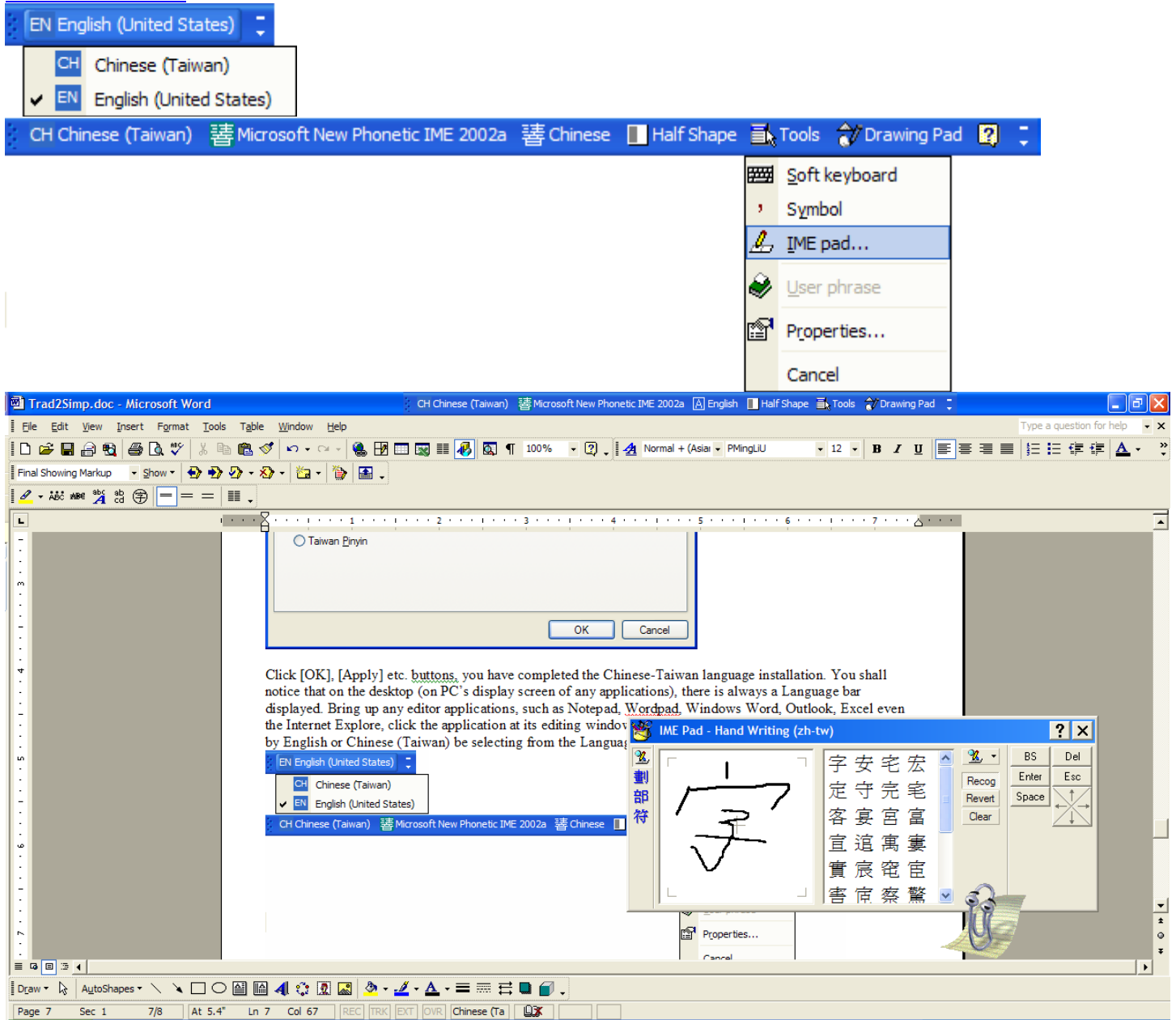


有多種鍵盤選擇，但只可擇其一種：漢語拼音(HanYu Pinyin)，依天(Eten)，按注音秩序(Standard)。文末筆者附有漢語拼音與注音符號對換表。因為我們先前選的是正體字(Chinese-Taiwan)，因此雖用漢語拼音鍵盤將仍會選出正體字來。



Click [OK], [Apply] etc. buttons, you have completed the Chinese-Taiwan language installation. You shall notice that on the desktop (on PC's display screen of any applications), there is always a Language bar displayed. Bring up any editor applications, such as Notepad, Wordpad, Windows Word, Outlook, Excel even the Internet Explore, click the application at its editing window (or editing box area), you shall be able to edit it by selecting English or Chinese (Taiwan) from the Language bar. Once the Chinese is selected, the keyboard is mapped for entering Chinese by the method (HanYu Pinyin) was setup. The IME (Input Method Editor) pad

would be useful if you have a handwriting tablet pad, such as 小蒙田 or USB WriteScreen tablet pad from [Hi-Tech Instruments](#).



注音符號與漢語拼音對換表

ㄅ	ㄆ	ㄇ	ㄈ	ㄉ	ㄊ	ㄋ	ㄌ	ㄍ	ㄎ
b	p	m	f	d	t	n	l	g	k
ㄏ	ㄐ	ㄑ	ㄒ	ㄓ	ㄔ	ㄕ	ㄖ	ㄗ	ㄘ
h	j	q	x	zh	ch	sh	r	z	c
ㄙ	ㄚ	ㄛ	ㄜ	ㄝ	ㄞ	ㄟ	ㄠ	ㄡ	ㄢ
s	a	o	e	ie	ai	ei	ao	ou	an
ㄨ	ㄨ	ㄨ	ㄨ	ㄨ	ㄨ	ㄨ			
ㄨ	ㄨ	ㄨ	ㄨ	ㄨ	ㄨ	ㄨ			
en	ang	eng	er	i	u	v			

一或ㄨ是字頭音符時加 Y 或僅用 Y。不可有兩個母音字(u & e 或 o & i)並存, yueng 變成 yong(用), zhueng 變成 zhong(重), jiou 變成 jiu(就)。

ㄨ	ㄨ	ㄨ	ㄨ	ㄨ	ㄨ	ㄨ			
you	ying	yin	yue	yuan	yun	yong			
有	應	因	約	原	雲	永用			

但是不能有單一音符成字

Examples:

日	一	雲	努	華	準	正	中	居	存
ri	yi	yun	nu	hua	zhun	zheng	zhong	ju	cun